



# REIMERS SYSTEMS, INC.

WE WORK BETTER  
UNDER PRESSURE





RSI Model 9612D Chamber System, Conroe, Texas



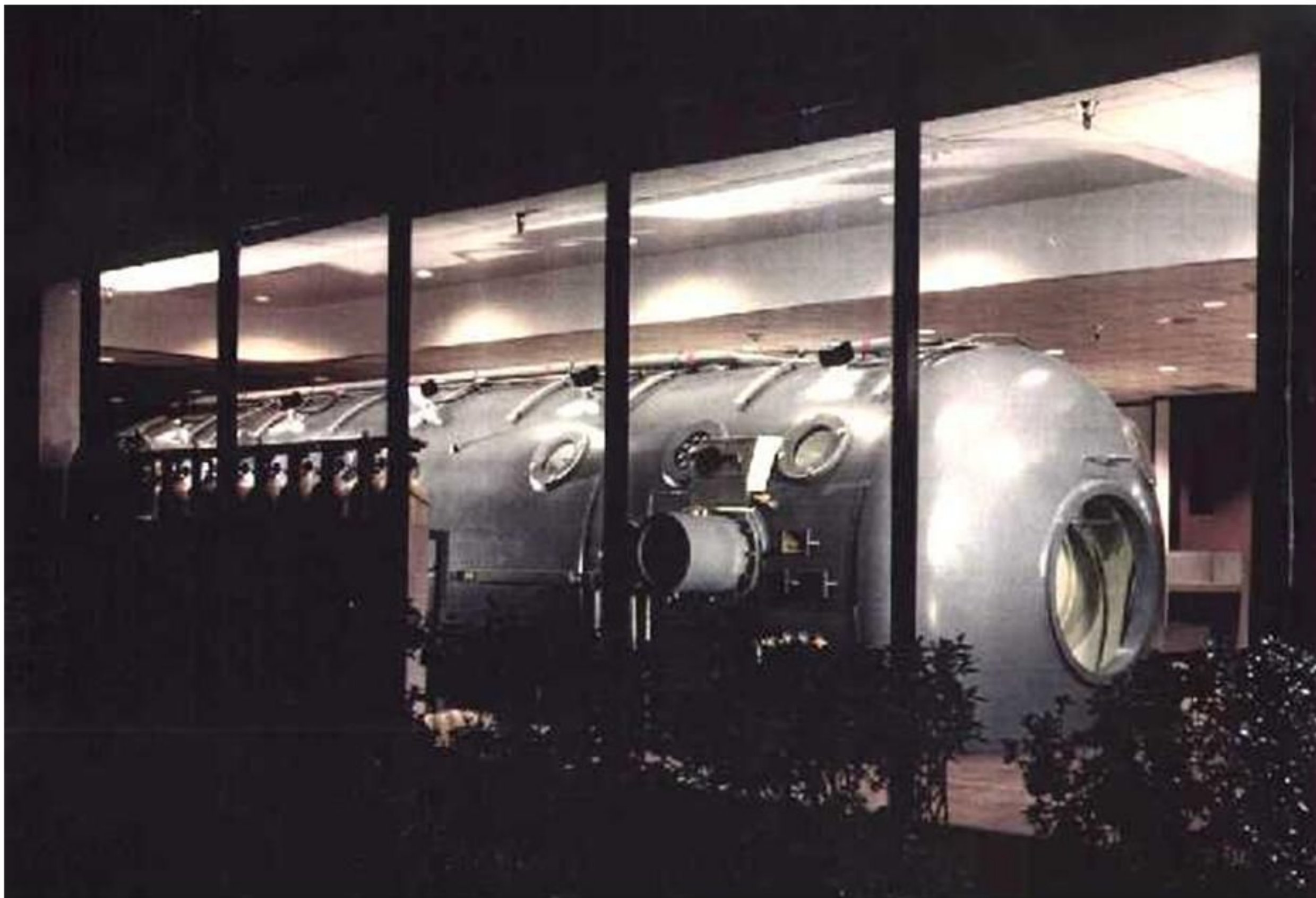
RSI Model 9612D Chamber System, Conroe, Texas



RSI Model 12016T Chamber System, Seattle, WA

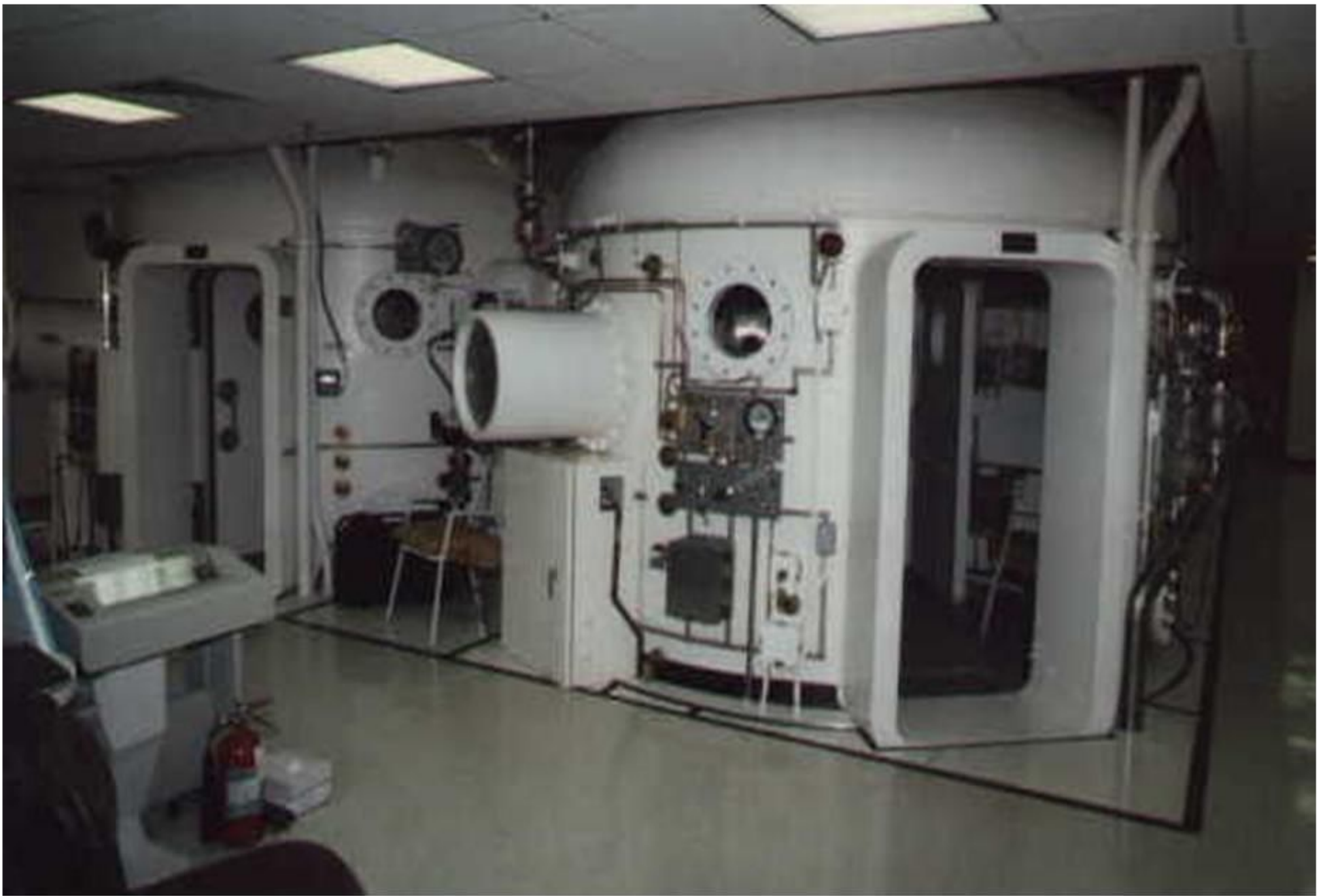


RSI Model 12016T Chamber System, Seattle, WA



RSI Model 9612D Chamber System, Conroe, TX

**REIMERS**  
SYSTEMS, INC.



RSI Designed 3 Lock Chamber, Wright Patterson AFB, Ohio



RSI Designed 3 Lock Chamber, Travis AFB, California



RSI Model 9608D Chamber System, Walter Reed Army Med Ctr



Hyperbaric Swimming Treadmill, US Olympic Village, Colorado

**REIMERS**  
SYSTEMS, INC.



RSI Model ATR-6 Altitude Training Chamber, Dhaka, Bangladesh



09 12 14

RSI ATR-20 Altitude Training Chamber, Univ. of North Dakota





RSI Model 4802-S Containerized HBO System—Ready to Ship

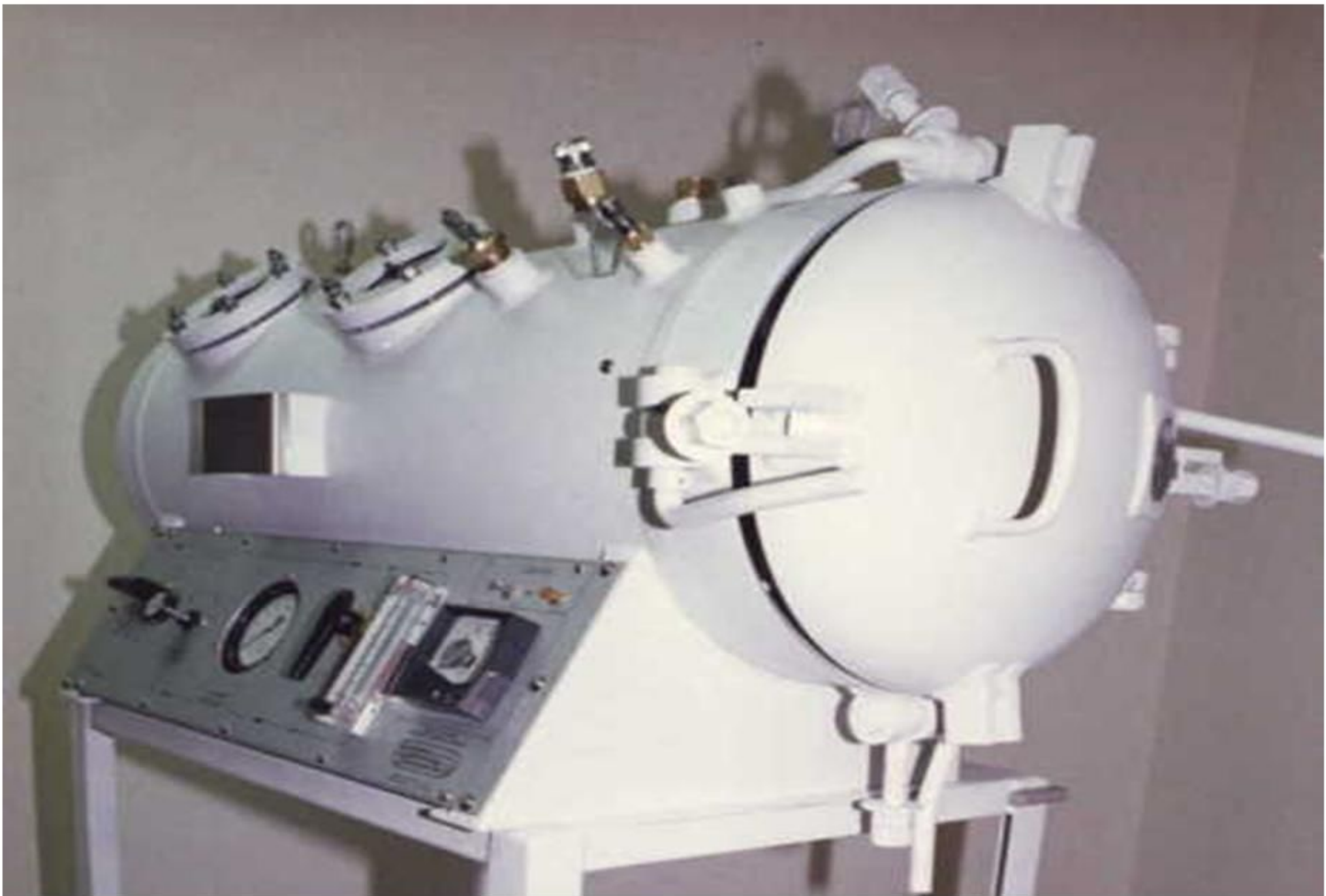
**REIMERS**  
SYSTEMS, INC.



RSI Model 4802S-Containerized Chamber System-Interiors



RSI Model B-11 Hyperbaric Research Chamber



RSI Model 17-48 Hyperbaric Research Chamber



Sechrist Monoplace Chambers with RSI Air Ventilation System

**REIMERS**  
SYSTEMS, INC.



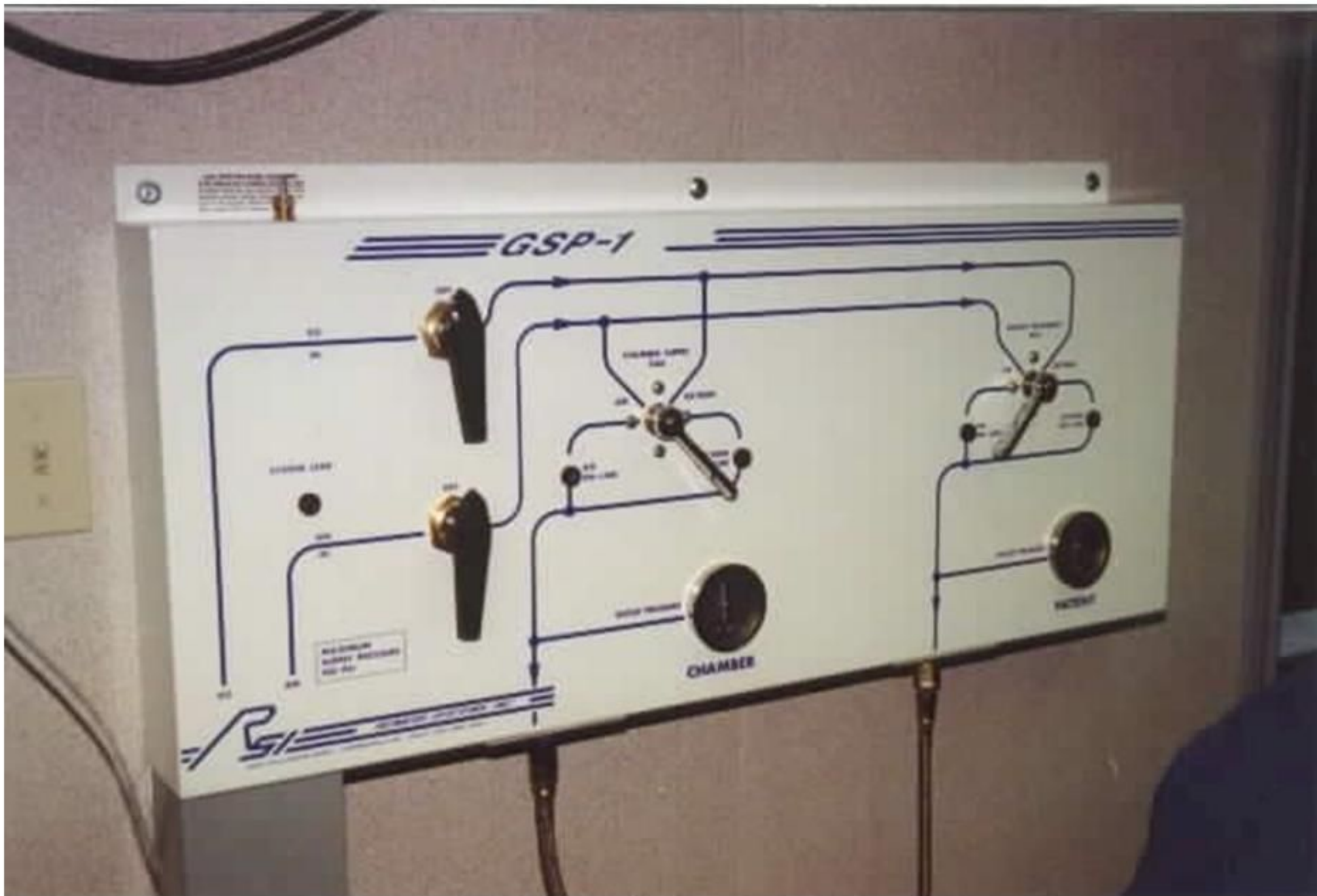
Design Services for Hospital Liquid Oxygen Supply Systems

**REIMERS**  
SYSTEMS, INC.



RSI Model 20K2000 Liquid Cylinder Oxygen Service

**REIMERS**  
SYSTEMS, INC.



RSI Model GSP-1 Hospital Grade Gas Selection Panel



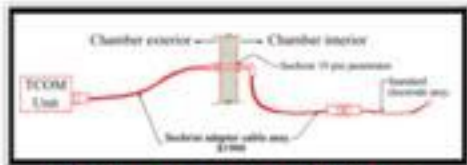
RSI Model ODS-1 Monoplace Chamber Hood & Mask Driver

# TCOM

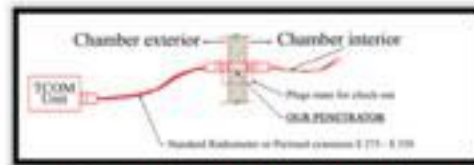
Transcutaneous  
O<sub>2</sub>/CO<sub>2</sub> Monitor

## PENETRATOR

For most mono-place hyperbaric systems



THE OLD WAY \$1900.00



THE NEW WAY \$275 - \$350

**REIMERS**  
SYSTEMS, INC.

**(877) REIMERS**  
**7 3 4-6 3 7 7**  
Email: [reimers@knight-hub.com](mailto:reimers@knight-hub.com)

Tel: (703) 866-5490  
Fax: (703) 866-9066  
7668 Fullerton Road,  
Springfield, VA 22153

### TECHNICAL

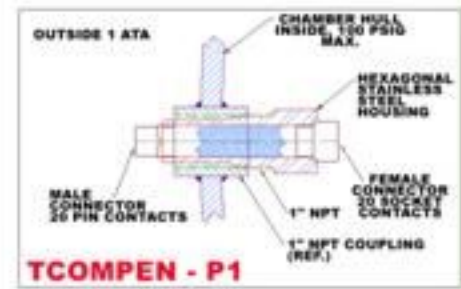
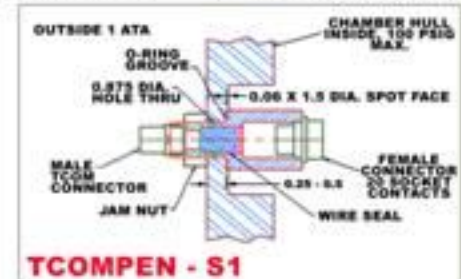
### INFORMATION



#### ORDERING INFORMATION

Pressure Rating: Vacuum to 100 psig

PART NUMBERS	DESCRIPTION
<b>PENETRATORS:</b> TCOMPEN-S1	Fits utility door ports for: Sechrist Chambers: all models Perry Sigma I Nautilus HBO1
TCOMPEN-P1	Fits most 1" FNPT ports. Typical applications: Multiplace hyperbaric chambers Altitude chambers Research chambers
TCOMPEN-Special	If you can draw it, we can make it. (minimum clear opening diameter of .875")
<b>STANDARD EXTENSION CABLES:</b> TCOMCABLE-10	Standard Radiometer Extension Cable, 10 feet long
TCOMCABLE-20	Standard Radiometer Extension Cable, 20 feet long
<b>MATING PLUGS:</b> TCOMPLUG-X-YY	Length Specifier 00 = plug comes unassembled 18 = plug comes with flying lead 18" long, other lengths available, specify desired length  Gender Specifier M = male (connects to inside end of penetrator) F = female (connects to outside end of penetrator) S = male, female set
<b>SPECIAL CABLES:</b> TCOMPLUG-X-YY-Z	Opposite End Specifier: C = custom plug (specify desired plug)



**REIMERS**  
SYSTEMS, INC.

Tel: (703) 952-0240 Fax: (703) 952-0244  
7666 Fullerton Road, Springfield, VA 22153

Email: [info@ReimersSystems.com](mailto:info@ReimersSystems.com)

[www.reimerssystems.com](http://www.reimerssystems.com)

RSI Electrical Feed-Thru System-No More Special Cables

**REIMERS**  
SYSTEMS, INC.